



Institute News

Editor: Jonathan Baillie
jonathanbaillie@stepcomms.com
Technical Editor: Mike Arrowsmith
BSc(Hons), CEng, FIMechE, FIHEEM
Business Manager: Nick Carpenter
nickcarpenter@stepcomms.com
Business Manager online: Chris Vincent
chrisingent@stepcomms.com
Publisher: Geoff King
geoffking@stepcomms.com
Publishing Director: Josh Taylor
joshtaylor@stepcomms.com
Journal Administration: Kate Phillips
katephillips@stepcomms.com
Journal Design: Dave Woodall
Ray Ecclestone

Published ten times a year by:
Step Communications Ltd
Step House, North Farm Road,
Tunbridge Wells, Kent TN2 3DR
Email: hej@stepcomms.com
Web: www.healthestatejournal.com
Tel: 01892 779999
Fax: 01892 616177

Published on behalf of:
The Institute of Healthcare
Engineering and Estate Management
2 Abingdon House,
Cumberland Business Centre,
Northumberland Road
Portsmouth, Hants PO5 1DS
Reg Charity No 257133
Tel: 023 9282 3186
Fax: 023 9281 5927
Email: office@iheem.org.uk
Web: www.iheem.org.uk

President: Paul Kingsmore BA(Hons), MBA,
CEng, FIMechE, FIHEEM, MCIM

Chief Executive:
Julian Amey MA, FRSA
julian.amey@iheem.org.uk

Accounts Manager: Annabelle Morgan
annabelle.morgan@iheem.org.uk

Recruitment/Membership Manager:
Chris Parker
chris.parker@iheem.org.uk

Events/Education Manager: Siân Barker
sian.barker@iheem.org.uk

Membership Officers:
Clair Wilkins
clair.wilkins@iheem.org.uk
Kate Newman
kate.newman@iheem.org.uk

Journal Subscription

	UK	Overseas	
Annual	£88	Annual	£99
Half year	£53	Half year	£59
Cost per issue	£17	Cost per issue	£18

©2012: The Institute of Healthcare Engineering and Estate Management
UK ISSN 0957-7742

Printed by Printwells. Tunbridge Wells, Kent TN2 3XF

Neither the Institute nor the Publisher is able to take any responsibility for views expressed by contributors. Editorial views are not necessarily shared by the Institute. Readers are expressly advised that whilst the contents of this publication are believed to be accurate, correct and complete, no reliance should be placed upon its contents as being applicable to any particular circumstances. Any advice, opinion or information contained is published only on the footing that The Institute of Healthcare Engineering and Estate Management, its servants or agents and all contributors to this publication shall be under no liability whatsoever in respect of its contents.

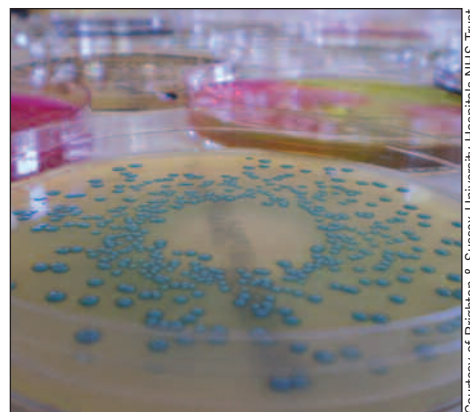
Dealing with water safety and hygiene in hospitals

With the recent focus on, and extensive media coverage of, the safety of hospital water systems (*HEJ* – May 2012, and pages 23-27 of this issue), two IHEEM 'masterclass seminars' being held in Leeds and London next month, entitled 'The Invisible Threat', will offer expert guidance and advice on maintaining a safe, high quality water supply and, for example, minimising the risk of waterborne infection to patients and staff.

Also examined at the seminars, which will take place on 17 July at the Rose Bowl at Leeds Metropolitan University, and on 19 July at the Mary Ward Centre, 10 Great Turnstile, London, will be 'competing and antagonistic threats' such as scalding and environmental impact, and a variety of other key water management and water safety and hygiene issues.

Siân Barker, IHEEM's events/ education manager, says: "In the past two years the sector has seen a new British Standard on Legionellosis risk assessment, new guidance on *Pseudomonas* following the death of neonates in Belfast, new SHTM04 guidance on water, a new BS 8558:2011 guidance document which replaces BS 6700, and talk of eliminating flexible hoses and using fewer TMVs etc, all against a backdrop of pressure to reduce costs.

"These masterclass seminars, to be chaired by David Harper – a well-known ex-hospital engineer and expert in waterborne contamination prevention and emergency response, will explain the latest guidance and regulations, and discuss some of the



A variety of microorganisms growing on agar plates.

latest research findings and technology. They will also provide a great platform for discussions with other delegates."

The speaker line-up includes:

- John Newbold – HM Specialist Inspector, HSE.
- Dr Nick Hill – technical director, the Water Hygiene Centre.
- Clare Reynolds – Laboratory manager (Water Testing), Brighton & Sussex University Hospitals NHS Trust.
- Steve Mount – *Legionella* consultant, Steve Mount Associates.
- Alan Hambidge – Director, Empathy Environmental Consultants.
- Rob Griffiths – *Legionella* consultant (Water Regulations), Griffiths Associates.

The seminars, at which numbers are now limited, are being supported by an education grant provided by Pall Medical.

Siân Barker adds: "Are you a company affiliate member of IHEEM? If so, why not take part in the CASP (Company Affiliate Supporter Package) initiative, which will give you a branding/profile opportunity, as well as the chance to join in the debate and network with delegates and speakers." T: 02392 823186, or email: sian.barker@iheem.org.uk

- IHEEM is also keen to hear suggestions by e-mail for future seminar 'hot topics'; senders of suggestions have the chance to win a free place at an IHEEM training seminar of their choice over the next year. The winner will be announced in a future edition of *HEJ*.



Apparatus for water testing in a hospital microbiology laboratory.

New product/service category for Awards

As detailed in May's *HEJ*, the annual IHEEM awards have been 'revised and reviewed', and, from this year, are being opened up 'to give the whole of the healthcare industry supply chain – rather than just the Institute's members' – the opportunity to participate.

The Awards will also include a new category celebrating the achievement of an organisation that has identified new products or services and successfully brought them to market, or adapted an existing product for a new market.

Nominations for all the awards (apart from the Northcroft Silver Medal and the William E Schall Award), adhering to the eligibility criteria set out below, are invited from individuals, IHEEM branches, NHS, or private organisations, and should be submitted via the IHEEM website (www.iheem.org.uk), by 31 July.

The Awards will be presented at a formal dinner on the first night of this year's IHEEM Healthcare Estates Conference and Exhibition (see also pages 8 and 9).

Details and eligibility criteria for all the 'revised' awards are as follows:

- The IHEEM Lifetime Achievement Award, which can be given posthumously, is presented to an individual who has given long service to the healthcare industry, either within the NHS or in the private sector, and made a significant contribution to their specialist field. The award-winner is selected from the nominations received by an Award Working Group established by the IHEEM Council, and receives an inscribed medal and certificate.
- The John Bolton Memorial Award for excellence in education, training, and development, is for a facilities directorate, NHS Trust, or health service provider to the NHS, that has contributed to the development, training, and career progression of their staff, and delivered service improvements in the estates and facilities field. The winning organisation will be selected from the nominations received by the IHEEM Education & Training Committee, and will receive an inscribed medal and certificate.
- The Lucas Scholarship Award goes to an individual who has made a significant contribution to the work and promotion of the Institute, or to the healthcare engineering and estate management profession. The award-winner will be selected from the nominations received by the IHEEM Membership Committee, and will receive a certificate and a complimentary pass to the annual conference.



Peter Tansey received the Lucas Scholarship Award as part of the 2011 IHEEM Awards at last year's Healthcare Estates Annual Conference Dinner. He is pictured with the then Yorkshire branch chairman, Ian Hinitt (left), and the Institute's President, Paul Kingsmore. This year IHEEM is opening up the Awards to a broader audience.

- The Northcroft Silver Medal is presented to the author of the technical paper published in *Health Estate Journal* (the Institute's monthly magazine) considered to have contributed most to the advancement of healthcare engineering. The technical paper must have been published in *HEJ* between August 2011 and June 2012, and should not have appeared in any other publication, but the paper may have been given at a branch meeting, IHEEM training seminar, or at the IHEEM annual conference. The award winner will be selected by the Education & Training Committee, and will receive a silver inscribed medal and a certificate.
- The William E Schall Award for excellence in medical technologies goes to a graduate who has made the best contribution while studying on the Medical Technologies Foundation Degree Course. The award-winner is selected by an Award Working Group established by the Council (it shall consist of a representative of the Institute, a representative from the University of Kingston upon Thames,

and a representative from Eastwood Park), and will receive a cheque for £50 and a certificate. The assessment is based on the best student on the second year of the Foundation Degree academically, who has contributed to the course through interaction with fellow students and tutors. The winner will be encouraged to publish an article in *HEJ* based on work undertaken during their course.

- The new Best Innovative Product or Service of the Year Award will be judged by an independent panel from the responses received, and the winning organisation will receive a trophy and certificate. The award seeks to highlight organisations that have identified new products or services and successfully brought them to market, or adapted an existing product for a new market. Entrants will need to clearly demonstrate that there was a demand for the innovation, and that it has proven successful in line with the objectives set.

Runner-up or highly commended certificates will be presented for some of the awards categories where appropriate. The winners will be entitled to claim reasonable expenses (i.e. their travel costs and accommodation on the night of the Awards Ceremony). Where winners are a group of people, or an organisation, the entitlement will be for a maximum of two people.

For the latest information, more on the Awards' history, and the terms and conditions, visit the IHEEM website: www.iheem.org.uk/awards



The Annual Conference Dinner in full swing in Manchester last year.

Flagship event aiming to further broaden appeal

The Healthcare Estates conference 2012, taking place at Manchester Central from 9-10 October, will focus on 'the most critical aspects of healthcare estates', with the programme combining seven plenary sessions and 24 stream sessions to provide 'broad and deep content'.

Among key areas addressed will be:

- The Health and Social Care Act – what will it mean for estates?
- How can we turn sustainability guidance into innovative practice?
- Designing for high quality care – design in the healthcare estate, and the impact that good design can have on patient outcomes.
- How can the NHS work better with the private sector to maximise its assets?
- Driving new efficiencies from existing assets.
- Getting the most value from PFI schemes.
- The latest thinking on, and technologies and solutions for, water treatment, and maintaining water hygiene/safety.

The organisers say: "With the Health and Social Care Act set to bring dramatic changes in commissioning, primary care, and public health, and with healthcare providers facing tough funding challenges, budgetary constraints, and rising demand, the need for a focused view on how estates teams can focus on long-term improvement has never been greater."

While this year's plenary sessions will address 'big issue' topics, such as how the Health and Social Care Bill will impact on the healthcare estate, 'focused and practical' stream sessions will cover topics including:

- International best practice – design innovations from around the world.
- The Premises Assurance Model PAM – readjusting the existing model to reflect the changing needs of the estates community.
- Public/private sector collaboration – lessons from clients on making the most of working with the private sector.
- Where do I fit within the new health landscape? Understanding your role and the role of estates.
- Key guidance updates – the latest in technical guidance and innovations.
- PFI workshop – staged by the Department of Health to help with practical understanding and skills to 'generate new efficiencies' from PFI schemes

Discount of 15% for NHS

Conference prices have been held at last year's level for IHEEM members, and are cheaper for the *conference plus* package, which includes attendance at the IHEEM Awards and Healthcare Estates Conference Dinner on the evening of 9 October at Manchester's Midland Hotel.

i2i Events says: "For those working in the NHS, there is even better news: NHS personnel are eligible for a 15% discount on all conference packages. It is also well worth everyone booking their place at the conference now, with 'super early bird' prices available until 22 June."

Conference speakers already confirmed include:

- Mike Burrows, Chief Executive, NHS Greater Manchester.
- Alastair Gourlay, programme director – Estate Development, Guy's and St Thomas' NHS Foundation Trust.
- Trevor Payne, director of estates and facilities, University College London Hospital NHS Foundation Trust.
- Paul Kingsmore, President, IHEEM, and Director, Health Facilities Scotland, NHS National Service Scotland.
- John Cole, director of Estates, Health Estates Investment Group, Department of Health, Social Services and Public Safety Northern Ireland.
- Louise Ramsay, assistant director, Facilities, NHS Hull.
- David Pokora, Executive Director, The LIFT Council.
- Ray Stephenson, programme manager, ProCure21+.
- Sarah Waller, programme director, Enhancing the Healing Environment, The King's Fund.



Static Systems' Phil Wade: "We will have a great opportunity to showcase applications designed around the latest practices in healthcare at this year's Healthcare Estates exhibition."



Design in Mental Health Network chairman, Joe Forster: "Healthcare Estates 2012 offers a key opportunity to engage with key mental health professionals and service user representatives."



- Barbara Coyle, programme manager, Strategic Health Asset Planning and Evaluation toolkit, North East Public Health Observatory, Durham University.
- Dr Michael Kelsey, consultant microbiologist, The Whittington Hospital NHS Trust.
- John Cooper, chair, Architects for Health.
- Tye Farrow, senior partner, Farrow Partnership Architects.
- Johannes Eggen, partner, Narud Stokke Wiig Arkitekter og Planleggere.
- Gareth Hoskins, director, Gareth Hoskins Architects.
- Keith Hayes, commercial director, North West Region, Mansell.

For the latest speaker and programme details, visit www.healthcare-estates.org.uk. Conference and dinner places can be booked online, or call: 0845 056 8339, or email: health.estates@i2ieventsgroup.com for more information.

The exhibition: Healthcare Estates 'VIP scheme' opens

With registration for the Healthcare Estates conference and exhibition now open, and a record attendance anticipated at this year's event, the exhibition's organisers have also launched a scheme to encourage more NHS professionals, particularly, to attend the Healthcare Estates exhibition. Steve Webb, director at Step Exhibitions, said: "Visitors from the NHS, care homes, mental health Trusts, Primary Care Trusts, private hospitals, and public sector attendees, will benefit from a number of incentives and exclusive opportunities when they attend this year's event. Having spoken to our key exhibitors and last year's visitors, one of our key aims this year is to make the event so full of useful content that potential attendees can make a really strong case to their management teams that they will benefit by attending."



The annual Healthcare Estates conference provides an excellent opportunity to hear from experts in their field on some of the most pressing and topical estates-related issues.

Scheme extended to all healthcare professionals

"This year, as a further incentive, we will be extending the scheme offering free 'VIP' parking and complimentary travel within Manchester that we successfully trialled last year to all healthcare professionals registering to attend, as well as to other key public sector workers keen to come. Once registered, VIP visitors will get a raft of benefits, including a list of reasons to attend, summarising the 'free' content available, regular updates on new product launches, and invitations to attend from exhibitors, plus the opportunity to participate in pre-arranged meetings.

"Through the Healthcare Estates VIP Programme," he continues, "we aim to deliver the right audience for our exhibitors' products. Our goal is to ensure that our exhibitors get the most out of exhibiting through meeting the right people. Exhibitors will be able to invite their key contacts as part of the scheme, and set up meetings on site in our dedicated VIP area, open to all our exhibitors and VIP customers. The VIP Programme is applicable to all qualifying visitors, and is free-of-charge."

Exhibitors positive

Exhibitors are already looking forward to this year's show. Static Systems Group sales director, Phil Wade, says: "We are extremely excited about this year's exhibition. We are constantly leading

innovation in advanced IP nurse call technology, and, once again, will have a great opportunity to showcase applications designed around the latest practices in healthcare. We applaud the organisers' steps to attract more NHS professionals to the event, and are pleased to continue our involvement as a key supplier at this important show."

Another exhibitor, Phil Dicken, sales director at Cooke Brothers, said: "We are delighted to be exhibiting for the first time at the Healthcare Estates exhibition. We will be showcasing a wide range of architectural hinges and hardware specifically designed for healthcare and mental health applications, plus innovative anti-barricade door solutions specifically designed for mental health environments, or where there is perceived risk of self-harm."

Steve Webb added: "Manchester has proven very popular with our visitors; they like its central location, and the standard of facilities at the newly refurbished centre.

Free presentations

"However, we are a national show, and realise that our visitors are investing valuable time to come to the event. This year's exhibition will include over 20 hours of 'free' presentations in our dedicated theatres, organised and presented by leading groups and partners working with the organisers, Step Exhibitions. VIPs will be set a programme of activities, and will benefit from complimentary tea and coffee, and dedicated business facilities to meet with potential suppliers and key contacts."

One of a number of influential groups that the exhibition organisers are working with this year is the Design in Mental Health Network, whose chairman, Joe Forster, said: "The Network will be holding a meeting, workshop, and exhibition networking, for DIMHN members and others involved in mental health, representatives from the Department of Health, and other partners. The meeting will take place on 9 October at Healthcare Estates, with pre-exhibition study visits to our Better Bedroom exhibit in nearby Warrington on the day before. This is a key opportunity to engage with key mental health professionals and service user representatives and find out what they are looking for."

Register now

To register as a VIP visitor, go to www.healthcare-estates.com, and click on 'Register now'. Qualifying visitors will be automatically registered for the scheme.

This website will also be regularly updated with information on key exhibition features. For full details on exhibiting and stand prices etc, contact the exhibition sales team: T 01892 518877, or email: healthcare@stepex.com

Congratulations

IHEEM would like to congratulate the following, who had Institute grades awarded, or Engineering Council status conferred on them, recently.

Fellow

- David Armstrong
- Charles Hanford
- Rupert Horne
- Robert Pitchford
- Iain Threlkeld
- Timothy Sheehan

Member

- Robert Baxter
- Andrew Fairless
- Mark Fordham
- William Foster
- Michael Gorman
- Mark Holloway
- Jeffrey Howarth
- Christopher Kelly
- Martyn Long
- Lee Palmer
- Patrick Morrison
- Krzysztof Panuchno
- Janette Park
- Jonathan Reid
- Derek Robertson
- Jeremy Slann
- Tony Sullivan
- John Sykes
- Julia Turner
- Ian White
- Mark Wilkinson
- Kai Siang Yeoh

Associate Member

- Greg Hansell
- Mark Riddell

Graduate

- Luke Broadbent

Company Affiliate

- GEMchem
- IN2 Design Engineering
- Trumpf Medical Systems

University Affiliate

- Heriot-Watt University

Student Affiliate

- Luro Gbotemi Pious

Engineering Technician

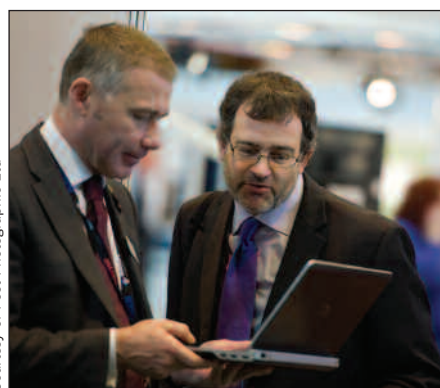
- Andrew Birch
- Gavin Grennan
- Francisco Pedrosa

Incorporated Engineer

- Anthony O'Connell
- Ivor Jones
- Mark Williams

Chartered Engineer

- Wayne Carr
- Ian Robinson



Branch members visit Energy House

The recent AGM of IHEEM's North-West Branch was followed by a talk by Swegon on air terminals and air handling units, with particular emphasis on energy performance, compliance with part L of the Building Regulations, and occupant comfort.

The many attendees had a chance to view a display of a working air handling units, which included a thermal wheel heat recovery system, and controls that can be incorporated into a building energy management system. The evening was kindly hosted by modular construction specialist, MDWS (UK), in Heywood, Lancashire, which also took attendees on a brief tour of its modular ward facility.

North-West Branch members also



recently visited the University of Salford to hear about the work being carried out by the University on its Energy House (see above) – a traditional pre-1920

'2-up 2-down' Victorian terrace house reconstructed using reclaimed materials from local sources. Erected within a fully environmentally controllable chamber that enables climatic conditions to be maintained, varied, and repeated, and patterns monitored, the house provides a testing and development facility in which researchers can work with industry to develop and test new technology and solutions to improve the energy efficiency of projects and processes. It is constructed so that the roof, windows, wall finishes, ceilings, electrical, and heating systems, can be changed as and when required. Each room is monitored for temperature and humidity, while gas, electricity, and water consumption, are also carefully scrutinised.

Education Committee has new chair

Anne Maguire, a highly experienced estates and facilities professional and Chartered Engineer who is particularly committed to ensuring that both new entrants to the field, and seasoned EFM personnel, continue to develop good skills, has been appointed as chair of the Institute's Education and Training Committee

She says: "Since graduating in Strathclyde in 1982, I have worked in a variety of construction-related roles, with healthcare buildings being a particular interest. My initial work in a consulting engineering practice saw me involved in hospital M&E design and services coordination, which embedded the complexity and critical nature of health sector engineering. After many years in various private practices, I moved to the client side, finishing my NHS career at associate director level, having managed all operational aspects and capital projects in several acute hospitals. I now work for myself in interim healthcare operational/project management – currently on a P21+ small works project helping to resolve risk and compliance issues in an acute Trust."

The Education and Training Committee is responsible for ensuring

that IHEEM properly looks after the training and educational needs of its members, including encouraging their participation in continuous professional development (CPD). This involves liaison with Engineering Council-approved providers, and encompasses everything from mentoring young engineers to ensuring that qualified members keep their knowledge up-to-date.

Anne Maguire adds: "The Committee also monitors the content and quality of the Institute's monthly magazine, *Health Estate Journal*. Its members have wide-ranging expertise and experience in healthcare estates management and engineering disciplines, and one of my aims is to help develop the brief to ensure that all potential members feel they can have a home in our Institution.

"I am particularly committed to, and a champion of, education. Healthcare's future looks increasingly technical and complex, and IHEEM needs to be at the table whenever discussions take place on overarching strategies and new directions that will have an impact across the sector, to ensure that the Institute's voice is heard. If you have any ideas for the Committee to discuss, please get in touch, either via IHEEM (T: 023 9282 3186), or via Linked In."

Diary dates

13 Jun: IHEEM London Branch summer visit to Brooklands Motor Museum. T: 07920 818515. Email: fombianche@talktalk.net

19 Jun: IHEEM East Midlands Branch presentation on 'The Role of the Authorising Engineer', BOC Tradequip offices, Derby. T: 0797 9854691. Email: peter.pierce@lcrfms.nhs.uk

28 Jun: IHEEM Yorkshire Branch seminar on 'Cloud-based technologies', Sovereign Lecture Theatre, Bradford Royal Infirmary, with presentations by Ithinksmarter and Pellucid. T: 0113 391 7570. Email: steve.batson@bowmanriley.com

17/19 Jul: IHEEM seminar, 'The invisible threat', on water quality issues, The Rose Bowl at Leeds Metropolitan University, Leeds, and Mary Ward Centre, 10 Great Turnstile, London. T: 023 9282 3186. Email: sian.barker@iheem.org.uk

17 Jul: IHEEM Southern Branch evening presentation on MEIGaN Version 2.0 2007, by Starkstrom. Queen Alexandra Hospital, Portsmouth. T: 023 8079 8433. Email: neil.haskell@uhs.nhs.uk

18 Sept: IHEEM Southern Branch presentation on indoor air quality, by Nationwide Filters, and Branch Meeting, Southampton General Hospital. T: 023 8079 8433. Email: neil.haskell@uhs.nhs.uk

18 Sept: IHEEM East Midlands Branch presentation on 'Solution-driven IP – the application of IP technology for healthcare communication and alarm systems', BOC Tradequip offices, Derby. T: 0797 9854691. Email: peter.pierce@lcrfms.nhs.uk

19 Sept: The Health and Care Infrastructure Research and Innovation Centre (HaCIRIC) International Conference, 'Transforming Healthcare Infrastructure and Services in an Age of Austerity', St David's Hotel & Spa, Cardiff. <http://tinyurl.com/bpwusxx>

9-10 Oct: Healthcare Estates 2012, Manchester Central. T: 023 9282 3186. www.healthcare-estates.com

14 Nov: IHEEM Southern Branch presentation on lift standards, by David Smith, Cook & Associates, and Branch Meeting, Southampton General Hospital. T: 023 80798433. Email: neil.haskell@uhs.nhs.uk



Are all NEW MEMBERS OF YOUR STAFF aware of the Institute and its services?

PLEASE ENCOURAGE THEM TO JOIN!

membership@iheem.org.uk